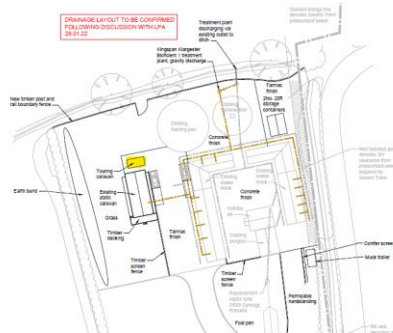


Creation of an earth bund to eastern boundary, erection of fencing, creation of a new access road, siting of 2no. shipping containers and temporary siting of 1no. static caravan and 1no. touring caravan, erection of decking adjacent to static caravan and installation of a sewage treatment plant (Retrospective)

**Rushmoor Stud, Rushmoor Lane, Bratton, Telford, Shropshire, TF5 0DA
TA/2022/0225**



Details of touring caravan



Indicative internal layout

Internal length 5.82metres External length 7.54 metres Width 2.24 metres wide



North facing elevation



East facing elevation



South facing elevation

West facing elevation